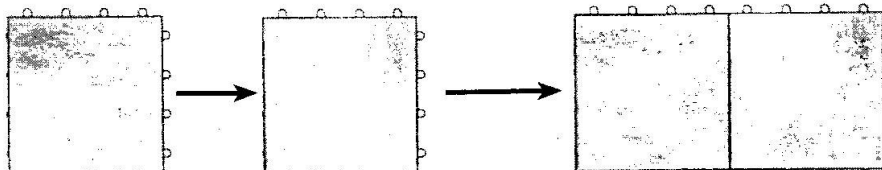


VINYL LOC AND WOOD LOC ASSEMBLY INSTRUCTIONS

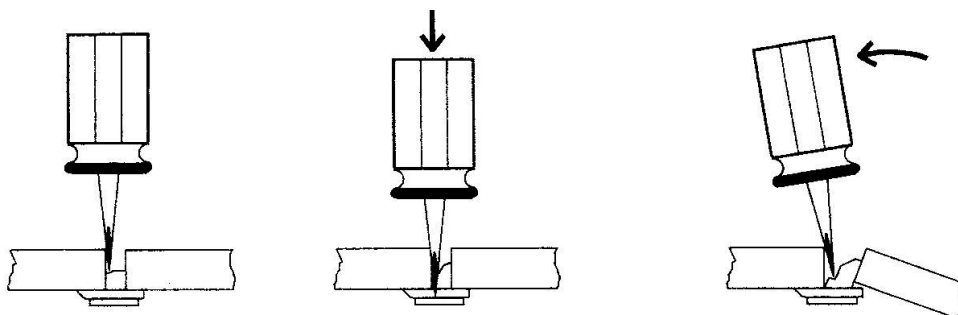


Note: The interlocking loop orientation of the tiles should always be the same.

TILE ASSEMBLY PROCEDURE

Assembly is accomplished by always orienting tile loops in same direction (as illustrated) prior to locking.

Care should be taken to align prongs with loops prior to striking with wooden mallet or firmly pressing directly above latch.



UNLATCHING PROCEDURE

(1 & 2) Insert small screwdriver between latch and adjacent tile.
Push screwdriver until depth (as illustrated) is reached.

(3) Rotate screwdriver prying latch upward from loop until it is unlocked.
Repeat operation to adjoining locks.

CAUTION: USE OF UNDUE FORCE MAY DAMAGE LOCKING